

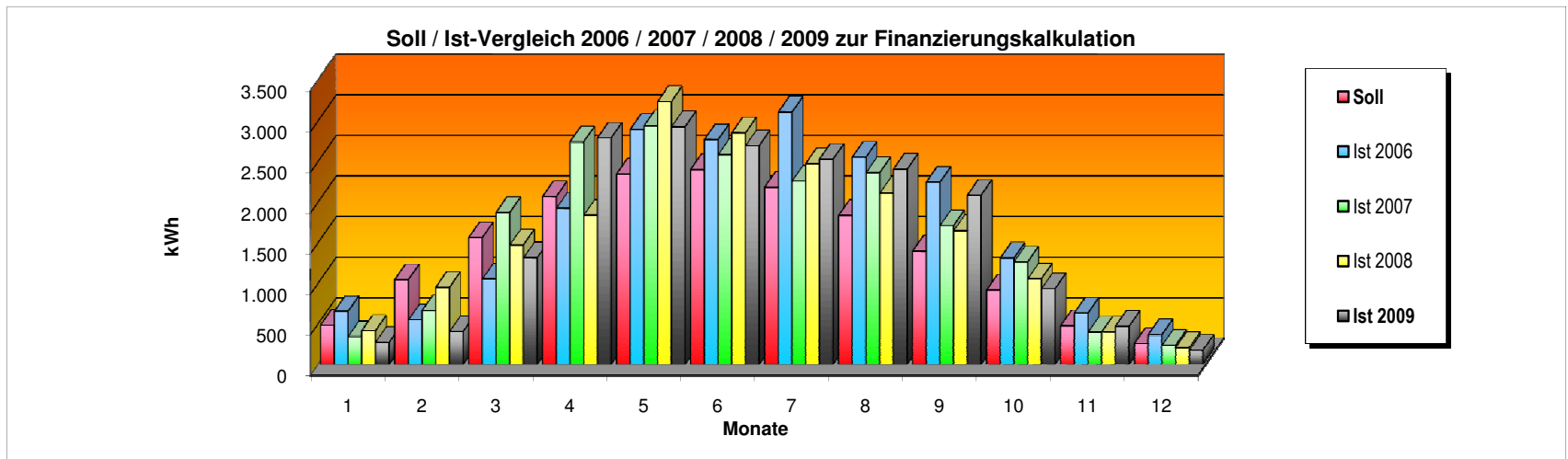
2009													
	Jan	Feb	Mrz	Apr	Mai	Jun	Jul	Aug	Sep	Okt	Nov	Dez	Summe
pro WR	121	261	390	517	587	600	545	459	349	229	119	65	4.242 kWh
4 Stck WR	485	1.043	1.561	2.068	2.347	2.401	2.182	1.836	1.395	916	475	259	16.969 kWh
pro kWp	24,51	52,70	78,84	104,46	118,52	121,25	110,20	92,72	70,44	46,27	23,99	13,10	857,00 kWh
in %	2,86%	6,15%	9,20%	12,19%	13,83%	14,15%	12,86%	10,82%	8,22%	5,40%	2,80%	1,53%	100,00%

Ist - Werte 2006													
4 Stck WR	654	548	1.053	1.924	2.896	2.768	3.109	2.553	2.246	1.310	633	367	20.061 kWh
pro kWp	33,04	27,67	53,16	97,18	146,28	139,82	157,00	128,95	113,42	66,16	31,97	18,54	1.013,18 kWh
% von Soll	134,80%	52,50%	67,42%	93,03%	123,42%	115,31%	142,47%	139,08%	161,02%	142,99%	133,26%	141,49%	118,22%

Ist - Werte 2007													
4 Stck WR	343	663	1.871	2.742	2.938	2.584	2.259	2.362	1.713	1.264	396	234	19.369 kWh
pro kWp	17,32	33,48	94,49	138,48	148,38	130,51	114,09	119,31	86,50	63,82	20,01	11,83	978,24 kWh
% von Soll	70,68%	63,54%	119,86%	132,57%	125,20%	107,63%	103,53%	128,68%	122,80%	137,94%	83,41%	90,29%	114,15%

Ist - Werte 2008													
4 Stck WR	414	949	1.472	1.838	3.238	2.852	2.474	2.110	1.649	1.056	399	206	18.658 kWh
pro kWp	20,91	47,95	74,36	92,84	163,55	144,03	124,93	106,57	83,28	53,32	20,14	10,42	942,31 kWh
% von Soll	85,33%	90,99%	94,32%	88,87%	138,00%	118,79%	113,37%	114,93%	118,23%	115,23%	83,96%	79,54%	109,95%

Ist - Werte 2009													
4 Stck WR	272	406	1.314	2.790	2.928	2.694	2.529	2.404	2.086	933	470	176	19.002 kWh
pro kWp	13,76	20,48	66,34	140,93	147,89	136,06	127,73	121,42	105,34	47,13	23,74	8,89	959,71 kWh
% von Soll	56,13%	38,86%	84,15%	134,91%	124,78%	112,21%	115,90%	130,96%	149,54%	101,85%	98,95%	67,85%	111,98%



Datenerfassung:

p & i photovoltaik GbR

Straße 142 Nr.17 in 13053 Berlin